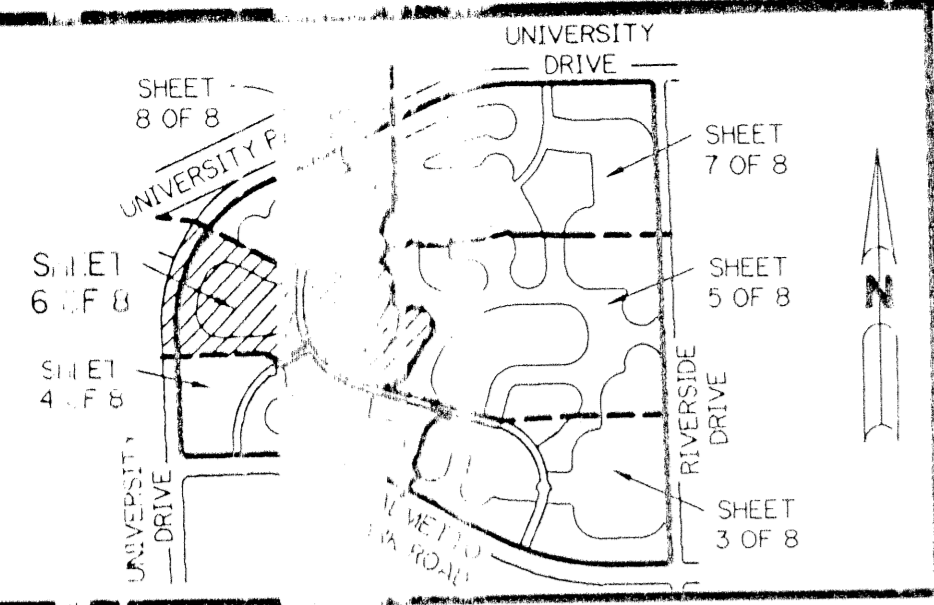


A PART OF THE BAY WINDS PLANNED UNIT DEVELOPMENT

BOCA FALLS - PLAT ONE

A PARCEL OF LAND LYING IN SECTION 22, TOWNSHIP 47 SOUTH, RANGE 41 EAST.
PALM BEACH COUNTY, FLORIDA.

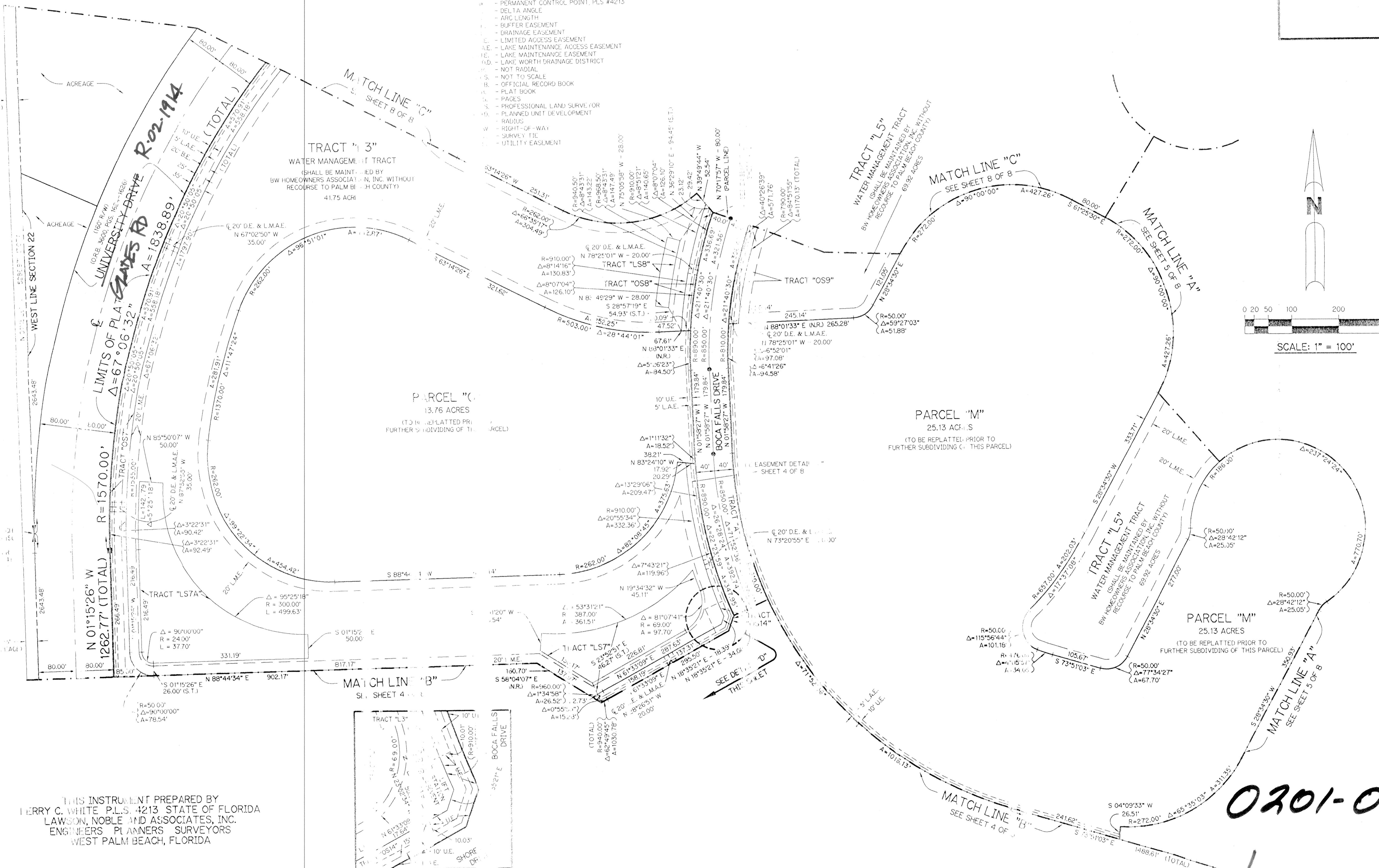
SHEET 6 OF 8 MAY, 1994



LEGEND:

- PM - PERMANENT REFERENCE MONUMENT, PLS #4213
- PCP - PERMANENT CONTROL POINT, PLS #4213
- DA - DELTA ANGLE
- AL - ARC LENGTH
- BE - BUFFER EASEMENT
- DE - DRAINAGE EASEMENT
- LE - LIMITED ACCESS EASEMENT
- LAE - LAKE MAINTENANCE ACCESS EASEMENT
- LM - LAKE MAINTENANCE EASEMENT
- LD - LAKE WORTH DRAINAGE DISTRICT
- NR - NOT RADIAL
- NS - NOT TO SCALE
- OR - OFFICIAL RECORD BOOK
- PB - PLAT BOOK
- PG - PAGES
- PLS - PROFESSIONAL LAND SURVEYOR
- PUD - PLANNED UNIT DEVELOPMENT
- R - RADIUS
- W - RIGHT-OF-WAY
- TIC - SURVEY TITLE
- UE - UTILITY EASEMENT

KEY MAP



SUBDIVISION * BOCA FALLS - PLAT ONE

BOOK 73

PAGE 129

FLOOD MAP # 100B

FLOOD ZONE A01

ZONING RT

QUAD # 69

SE 80-47

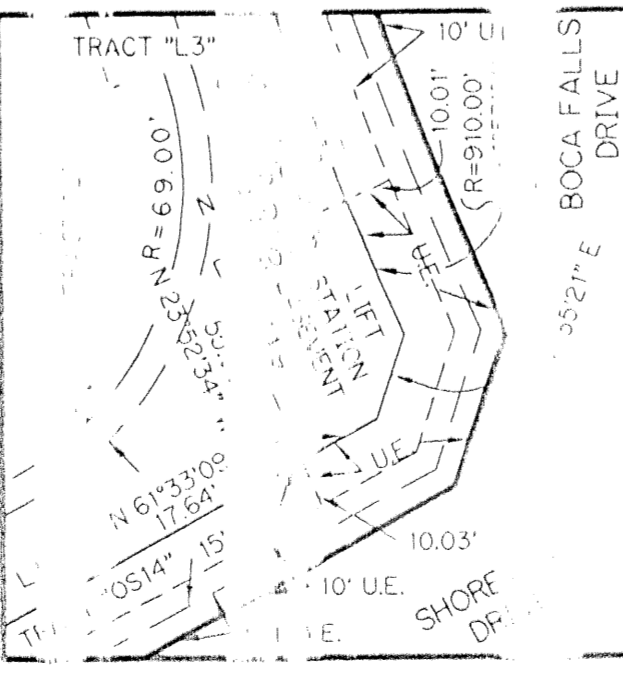
ZIP CODE 33433

PLANNED UNIT DEVELOPMENT

BAY WINDS P.U.D.

72778

THIS INSTRUMENT PREPARED BY
TERRY C. WHITE, P.L.S. #4213 STATE OF FLORIDA
LAWSON, NOBLE AND ASSOCIATES, INC.
ENGINEERS PLANNERS SURVEYORS
WEST PALM BEACH, FLORIDA



BOCA FALLS - PLAT ONE 73/129 SHEET 6 OF 8

0201-015